

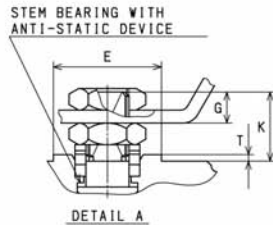
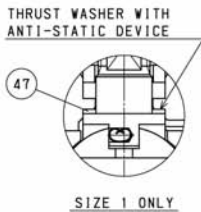
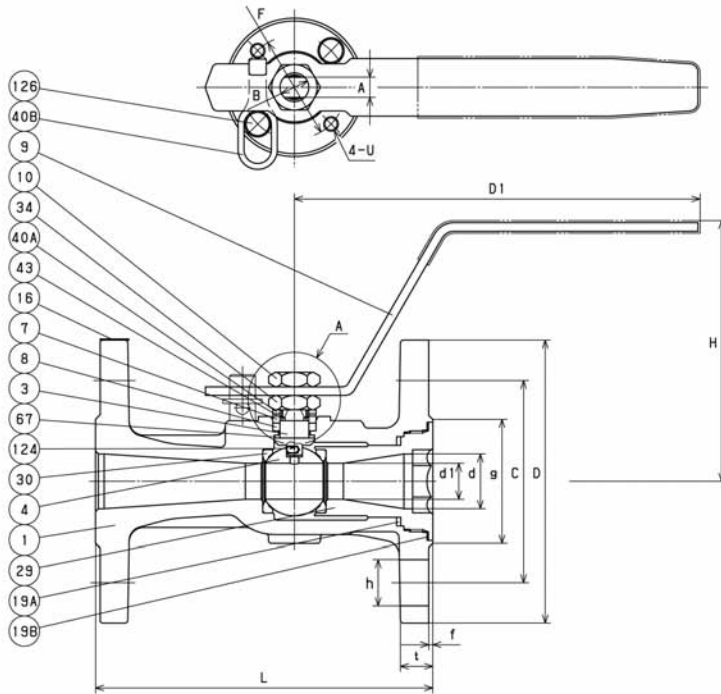


KITZ Corporation Of America
800-772-0073 • www.KITZ.com

CLASS 300 CARBON STEEL BALL VALVE/FLANGED
One Piece/End Entry • Regular Port • Stainless Steel Trim • Hyapatite Seats
CAPI/ISO5211 Mounting Pad



300SCTAM (C)
300SCTAM-FS (C)



MATERIAL LIST

No.	Name of Parts	Materials
1	BODY	A216 Gr. WCB
3	STEM	A276 TYPE 316
4	BALL	A276 TYPE 316
7	GLAND	A276 TYPE 316
8	GLAND PACKING	300SCTAM (C)
		PTFE
		300SCTAM-FS (C)
		FLEXIBLE GRAPHITE
9	HANDLE	STAINLESS STEEL
10	HANDLE NUT	STAINLESS STEEL
16	NAME PLATE	STAINLESS STEEL
19A	GASKET	PTFE
19B	GASKET	300SCTAM-FS (C)
		FLEXIBLE GRAPHITE
29	INSERT	A216 Gr. WCB
30	BALL SEAT	HYPATITE PTFE
34	GLAND NUT	STAINLESS STEEL
40A	LOCK PLATE	STAINLESS STEEL
40B	KEY LOCK PLATE	STAINLESS STEEL
43	CONED DISC SPRING	STAINLESS STEEL
47	THRUST WASHER	C/F PTFE (SIZE 1 ONLY)
67	STEM BEARING	C/F PTFE (SIZE 1/2 & 3/4)
124	RING SPRING	STAINLESS STEEL
126	STOPPER PIN	STAINLESS STEEL

NOTE

(1) All valves have an anti-static thrust washer or stem bearing insuring positive conductivity between body and stem.

DIMENSIONS

Unit : inch

Nominal Size	End Flange																				Mounting Dimensions for Actuator							ISO 5211 Flange Type
	in.	mm	d	d1	H	D1	L	D	Bolt Hole				Bolt Size	g	t	f	A	B	E	F	G	K	T	U				
									C	No.	h																	
1/2	15	0.49	0.39	3.50	5.52	4.5	3.75	2.62	4	0.62	1/2	1.38	0.56	0.06	0.276	0.394	0.985	1.417	0.28	0.63	0.06	1/4-20UNC	F03					
3/4	20	0.75	0.49	3.58	5.52	6	4.62	3.25	4	0.75	3/8	1.69	0.62	0.06	0.276	0.394	0.985	1.417	0.28	0.63	0.06	1/4-20UNC	F03					
1	25	0.98	0.67	3.94	6.30	6.5	4.88	3.50	4	0.75	3/8	2.00	0.69	0.06	0.355	0.473	0.985	1.417	0.39	0.85	0.06	1/4-20UNC	F03					

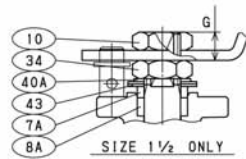
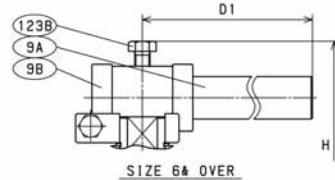
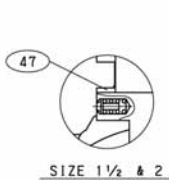
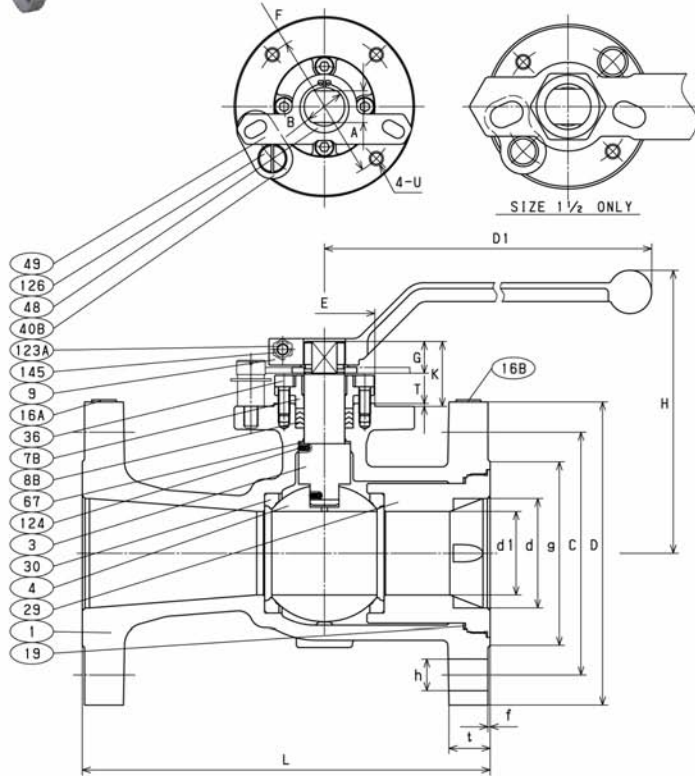


KITZ Corporation Of America
800-772-0073 • www.KITZ.com

CLASS 300 CARBON STEEL BALL VALVE/FLANGED
One Piece/End Entry • Regular Port • Stainless Steel Trim • Hypatite Seats
CAPI/ISO5211 Mounting Pad



300SCTAM (C)
300SCTAM-FS (C)



MATERIAL LIST

No.	Name of Parts	Materials
1	BODY	A216 Gr. WCB
3	STEM	A276 TYPE 316 or A479/A479M TYPE 316
4	BALL	A276 TYPE 316 or A351 Gr. CF8M
7A	GLAND	A276 TYPE 316 or A479/A479M TYPE 316 (SIZE 1 1/2 ONLY)
7B	GLAND	A351 Gr. CF8 (SIZE 2 & OVER)
8A	GLAND PACKING	300SCTAM (C) PTFE (SIZE 1 1/2 ONLY)
8B	GLAND PACKING	300SCTAM (C) PTFE (SIZE 2 & OVER) 300SCTAM-FS (C) FLEXIBLE GRAPHITE
9	HANDLE	STAINLESS STEEL (SIZE 1 1/2 ONLY) DUCTILE IRON (SIZE 2-4)
9A	HANDLE BAR	CARBON STEEL (SIZE 6 & OVER)
9B	HANDLE HEAD	DUCTILE IRON (SIZE 6 & OVER)
10	HANDLE NUT	STAINLESS STEEL (SIZE 1 1/2 ONLY)
16A	NAME PLATE	STAINLESS STEEL
16B	LEV PLATE	STAINLESS STEEL
19A	GASKET	PTFE
19B	GASKET	300SCTAM-FS (C) FLEXIBLE GRAPHITE
29	INSERT	A216 Gr. WCB (SIZE 1 1/2, 2, 8, 10) A105N (SIZE 3-6)
30	BALL SEAT	HYPATITE PTFE
34	GLAND NUT	STAINLESS STEEL (SIZE 1 1/2 ONLY)
36	GLAND BOLT	A193 Gr. B8M (SIZE 2 & OVER)
40A	LOCK PLATE	STAINLESS STEEL (SIZE 1 1/2 ONLY)
40B	KEY LOCK PLATE	STAINLESS STEEL
43	CONED DISC SPRING	STAINLESS STEEL (SIZE 1 1/2 ONLY)
47	THRUST WASHER	G/F PTFE (SIZE 1 1/2 & 2)
48	SNAP RING	CARBON STEEL (SIZE 2 & OVER)
49	STOPPER	STAINLESS STEEL (SIZE 2 & OVER)
67	STEM BEARING	G/F PTFE (SIZE 3 & OVER)
123A	HANDLE BOLT	STAINLESS STEEL (SIZE 2 & OVER)
123B	HANDLE BOLT	STAINLESS STEEL (SIZE 6 & OVER)
124	SPRING & PIN	STAINLESS STEEL
126	STOPPER PIN	STAINLESS STEEL
145	SPRING WASHER	STAINLESS STEEL (SIZE 2 & OVER)
155	SPACER	300SCTAM-FS (C) REINFORCED PTFE (SIZE 1 1/2 ONLY)

DIMENSIONS

Unit : inch

Nominal Size	End Flange												Mounting Dimensions for Actuator										ISO 5211 Flange Type
	in.	mm	d	d1	H	D1	L	D	C	No.	h	Bolt Size	g	t	f	A	B	E	F	G	K	T	
1 1/2	40	1.50	1.18	5.00	7.09	7.5	6.12	4.50	4	0.88	3/4	2.88	0.81	0.06	0.552	0.709	1.378	1.969	0.55	1.26	0.08	1/4-20UNC	F05
2	50	2.00	1.50	5.20	9.06	8.5	6.50	5.00	8	0.75	5/8	3.62	0.88	0.06	0.670	0.867	2.166	2.756	0.67	1.34	0.08	5/16-18UNC	F07
3	80	3.00	2.28	7.76	15.75	11.125	8.25	6.62	8	0.88	3/4	5.00	1.12	0.06	0.867	1.103	2.756	4.016	0.87	1.77	0.08	3/8-16UNC	F10
4	100	4.00	3.00	8.39	15.75	12	10.00	7.88	8	0.88	3/4	6.19	1.25	0.06	0.867	1.103	2.756	4.016	0.87	1.77	0.08	3/8-16UNC	F10
6	150	6.00	4.49	9.69	29.53	15.875	12.50	10.62	12	0.88	3/4	8.50	1.44	0.06	1.063	1.418	3.347	4.921	1.06	1.97	0.08	1/2-13UNC	F12
8	200	8.00	5.67	11.54	39.37	16.5	15.00	13.00	12	1.00	7/8	10.62	1.62	0.06	1.418	1.890	3.937	5.512	1.42	2.48	0.08	5/8-11UNC	F14
10	250	10.00	7.36	13.62	59.06	18	17.50	15.25	16	1.12	1	12.75	1.88	0.06	1.811	2.363	5.119	6.496	1.81	3.07	0.08	3/4-10UNC	F16